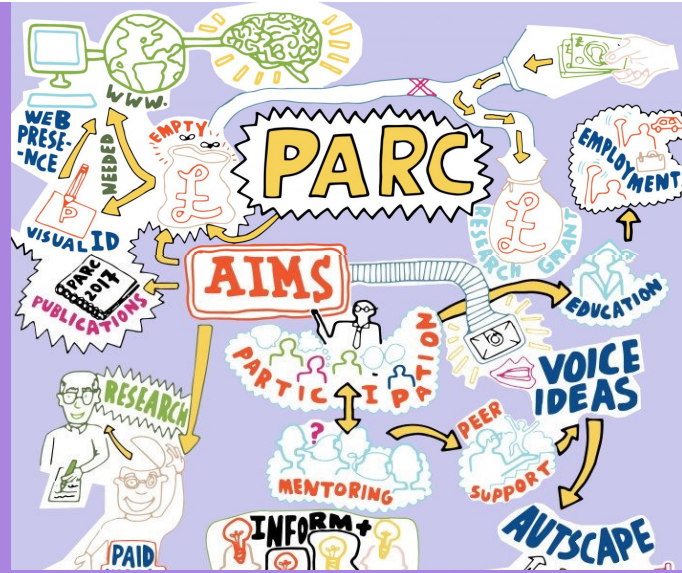


PARC

The Participatory Autism Research Collective



The Participatory Autism Research Collective (PARC) was initially developed at London South Bank University (LSBU) by Dr. Damian Milton and Professor Nicola Martin, with the first meeting being held in April 2015. PARC was set up with the purpose of bringing autistic people, including scholars and activists (but not exclusively), together with early career researchers and practitioners who work with autistic people, with the aim being to build a community where those who wished to see more significant involvement of autistic people in autism research could share knowledge and expertise.

Although the PARC project was initially based at LSBU, the group has also expanded to holding events across a variety of sites, including Birmingham, Sheffield, Nottingham and now Glasgow. We hope to help address the isolation often felt by autistic researchers, and also critically comment on autism research which disempowers autistic people.